

DETACHED E

3 Bedrooms / 3-4 Bathrooms

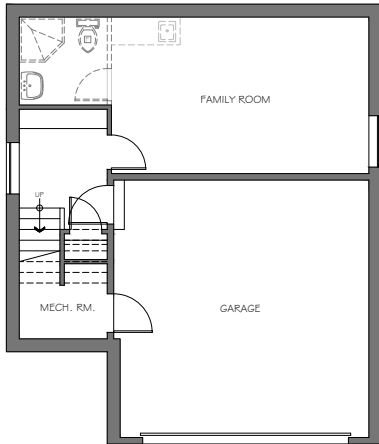
NATURE'S EDGE

21 MASTER-BUILT HOMES

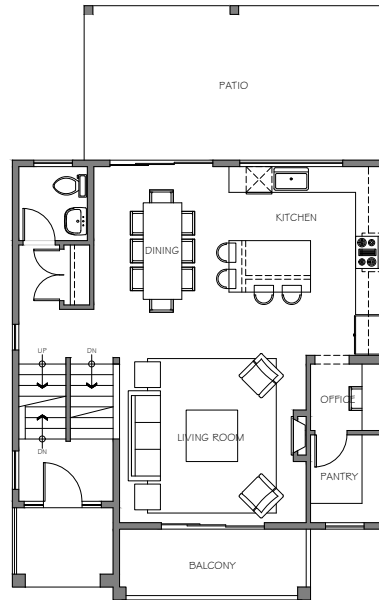
35247 Straiton Rd | Abbotsford BC

FLOOR PLAN

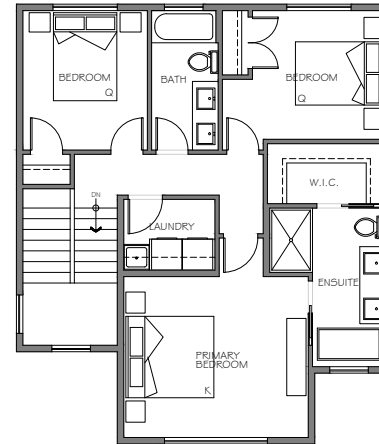
LOWER | 470 sf



MAIN | 823 sf



UPPER | 907 sf



TOTAL | 2630 sf

LIVING | 2200 sf

GARAGE | 430 sf

UNITS 14 & 17

UNITS 15 & 18

ON-SITE LOCATION

